

1stclass-homes.com

Alfa Residences

VILLAS IN
TALA



Paphos

Everything in one place

Paphos is Cyprus's cultural capital and in ancient times the first capital of the island . Rich in diversity and history dating back 9000 years, Paphos presents to its residents and visitors a truly unique experience by offering them a quality lifestyle that competes comfortably with the best cities in the world. The perfect place to experience the sites and scenes with its aged old history and new modern architecture.





Paphos magical promenade and 17km pedestrian walk way, offers its residents and visitors the ideal place for walking, jogging and viewing the most mystical of sunsets in the Mediterranean all along Paphos glorious sea front. The promenade and pedestrian pathway extends through all its ancient monuments and modern hotel infrastructure with blue flagged beaches along the way.





Vibrant *Paphos*

The city offers a nightlife that truly reflects its cosmopolitan and multicultural background. Serving you from state of the art beaches bar , sport bars ,pubs, night clubs and restaurants all the way up to Paphos inner city squares where the marbled walkways grace the scenes with all its splendor with hidden local taverns serving local cuisine away from all the hustle and bustle.



City Centre At Your Feet

SUNDAYS AT THE SQUARE



Nightlife





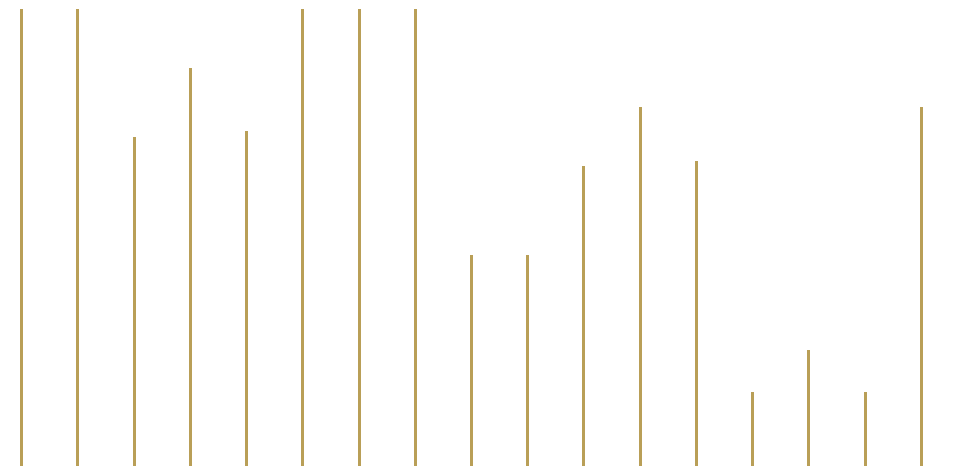
An Adventure *In Taste*

Paphos gastronomic scene comprises a delicious mix of fine and casual dining. It offers a great selection of cuisines as well as local traditional food.



An Adventure in Convenience and Community

Services include private schools, clinics and universities. Bus routes connect all the points of interests throughout the city all year around. The Paphos International airport connects residents and visitors to the rest of Europe with daily flights including the UK, Russia and the Middle East.





ALFA RESIDENCIES

Tala- Paphos

This unique designed project enjoys a privileged location in one of the most desirable residential location of Paphos, with spectacular views of the Paphos coastline and just moments away from Paphos city centre. A collection of 3 luxury villas, are set around private pools with views to the sea, city and mountains. They respond to the confident tastes of discerning clients.

Alfa villas feature fair face concrete, natural stone and iroko. The clusters are separated with landscaped greens ensuring optimal circulation and maximising privacy.





LOCATION

The village Tala is located in the district of Pafos, at a distance of 8 kilometers north of the city of pafos, within a magical natural environment. In regards to transportation, the village connects to the monastery of “Agios Neofytos” in the northeast (about 2 kilometers), which is within its administrative boundaries.

In the south it connects with the village of Emba (about 4 kilometers) and from there on with the city of Pafos.

The village is built at an average altitude of 280 meters. It has a general tilt from the northeast to the southwest and the altitude ranges from 150 to 600 meters.



7.2 km



700 meters



600 meters



2.9 km



7 km (A6)



8 km



8 km



22 km



PROPERTY FEATURES

- Mediterranean Sea View
- Spacious open plan living, dining and kitchen areas
- Granite worktops
- Marble stairs
- Top quality kitchens and wardrobes
- Double glazed thermal windows
- Glass balustrades
- Private Overflow Swimming pool
- Pressurized water system
- BBQ area
- Underfloor heating in bathrooms
- Solar water heating
- Large internal floor tiles 60x120
- Gated Entrance
- Roof Garden
- Energy Class A+





VILLAS INTERNALLY



VILLAS INTERNALLY





VILLAS INTERNALLY





VILLAS
INTERNALLY





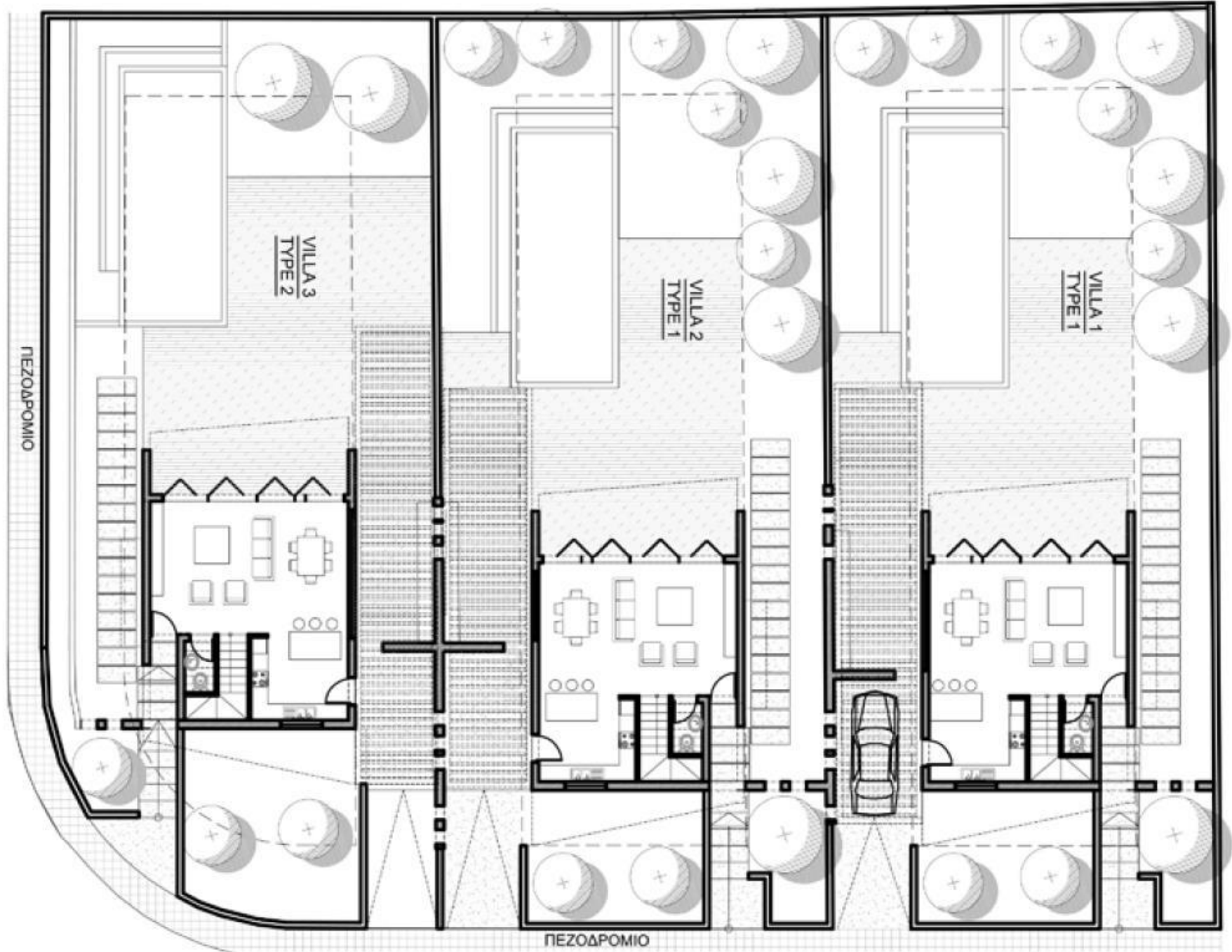
VILLAS
INTERNALLY



ROOF
GARDEN



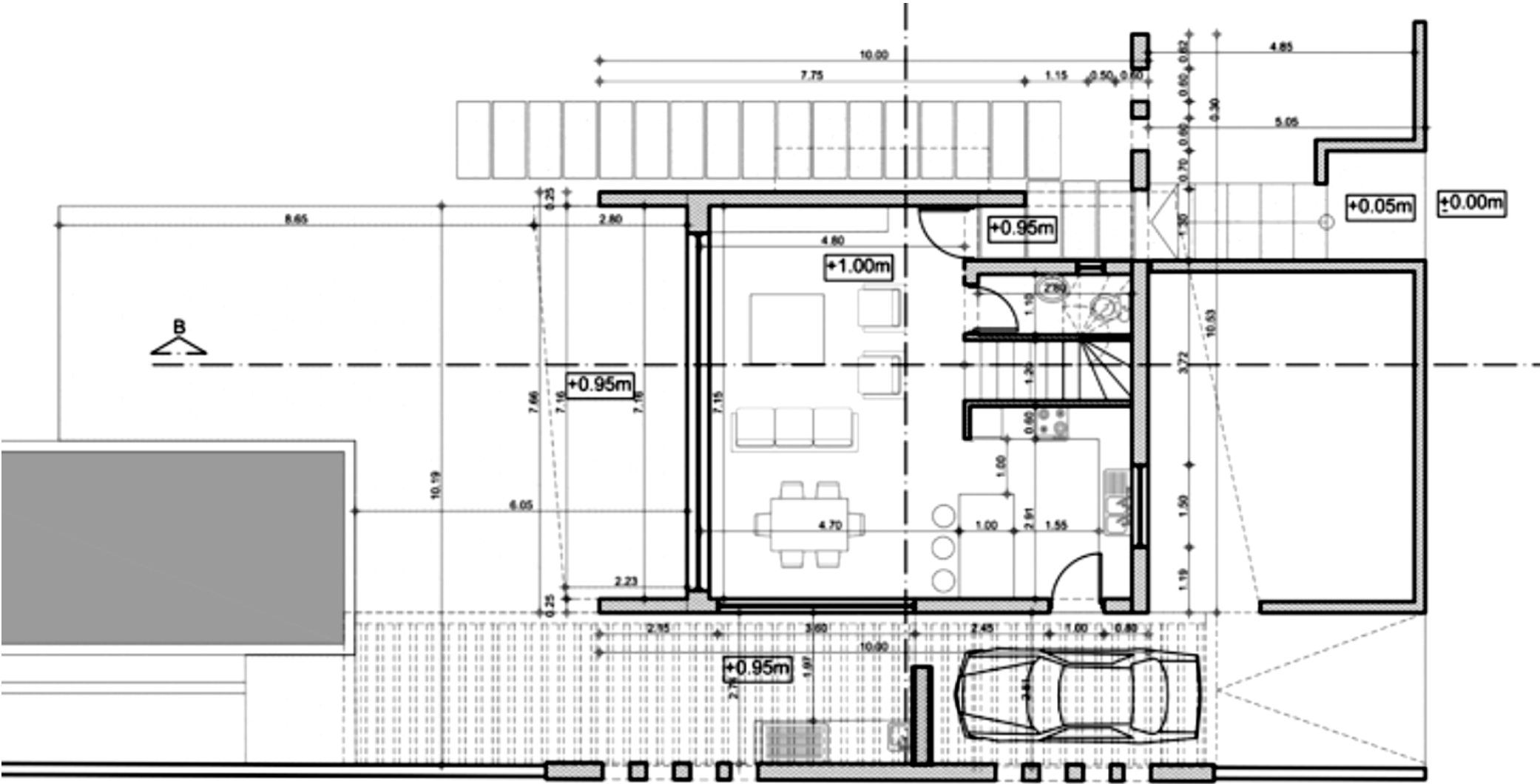
Master plan



Ground floor

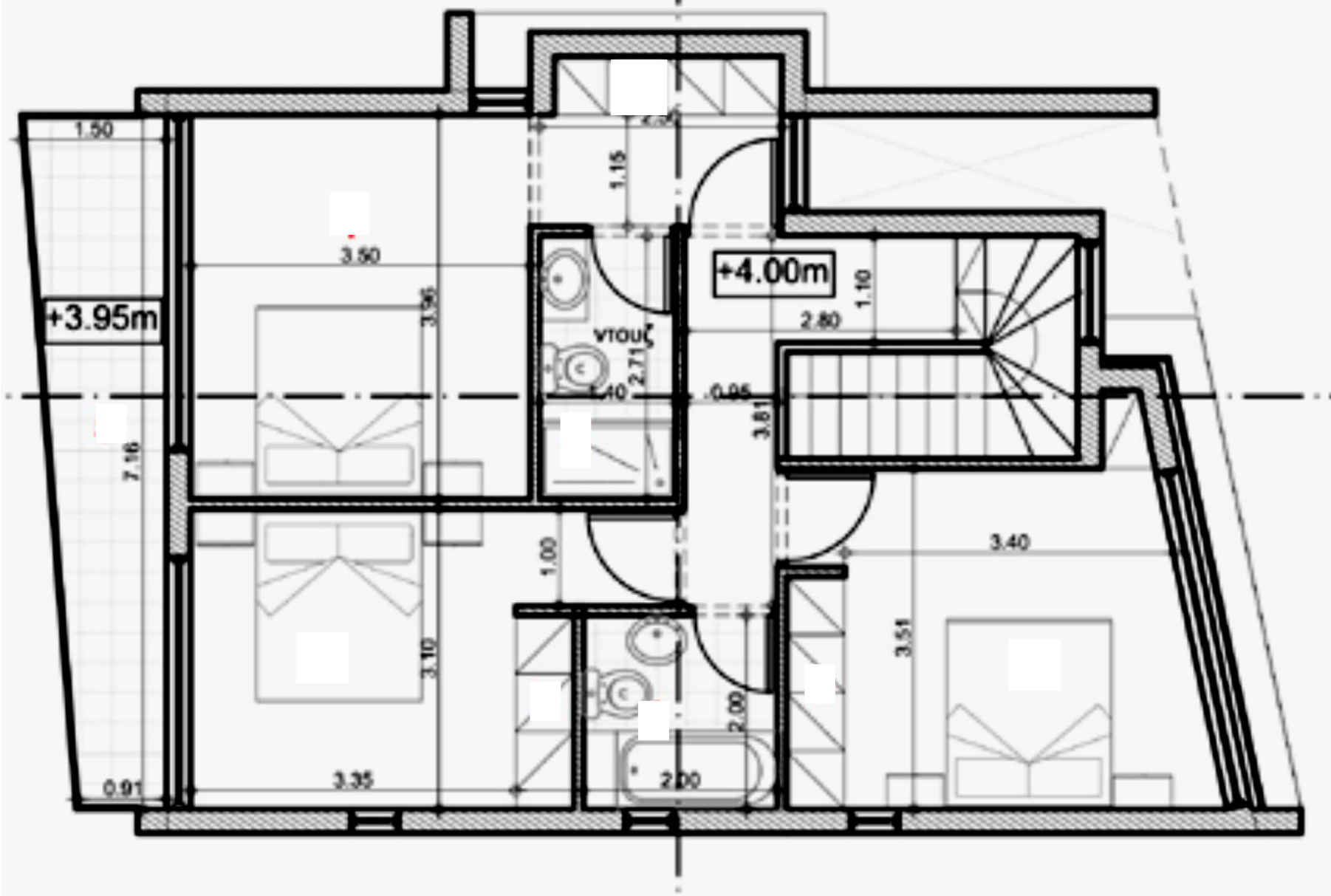
61sqm ground floor

Guest toilet



First floor

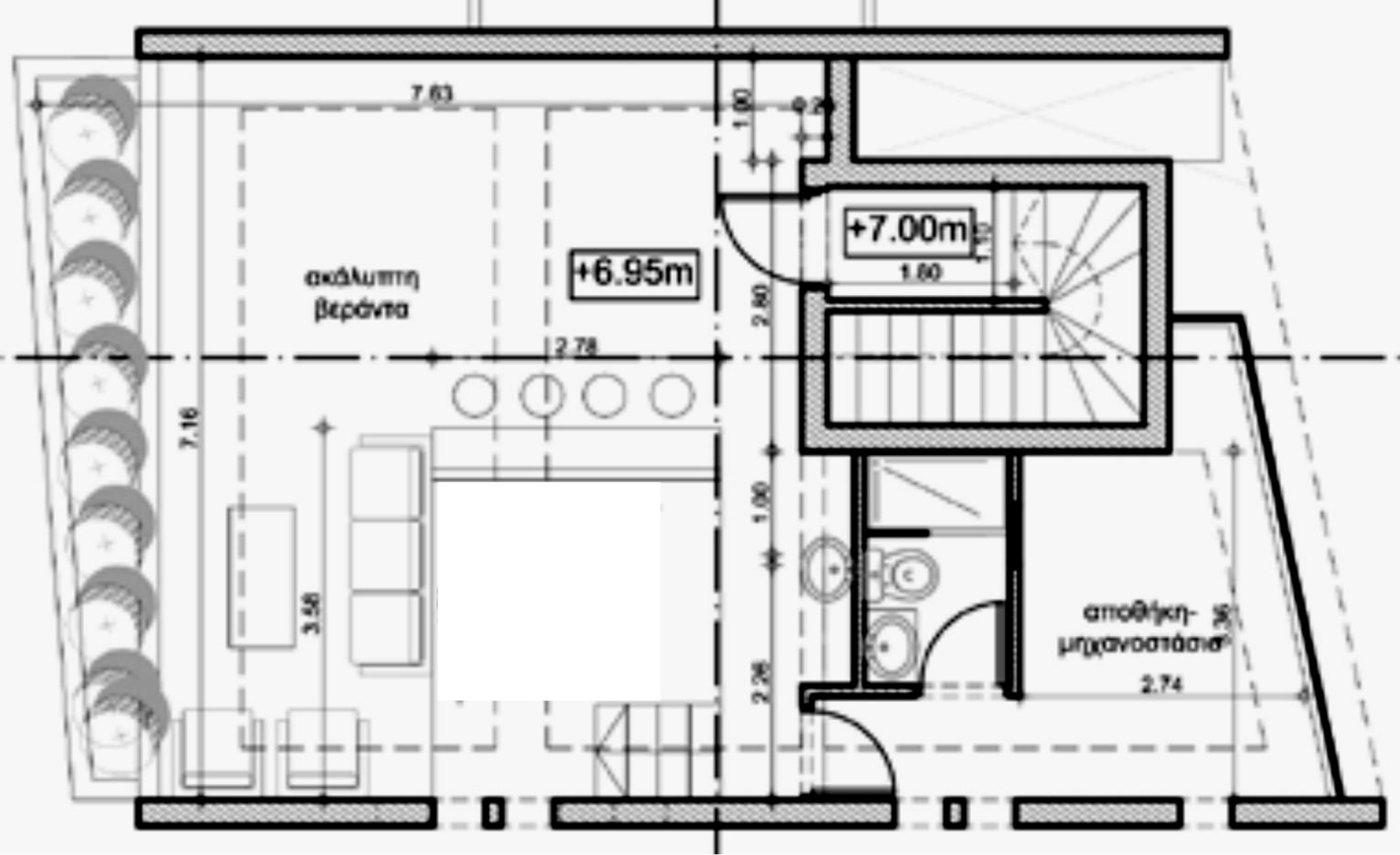
- 3 Bed Villa
- 77sqm
- 2 Bath



Roof Garden

57 sqm roof garden

1 toilet



1stclass-homes.com

Alfa Residences

VILLAS IN
TALA

